



INCH DIE SPRINGS

**100% Chrome Silicone Steel
Rectangular Wire Construction**

INCH DIE SPRINGS



Note: MDL Springs are designed to be interchangeable with springs from "Danly/IEM" and other manufacturers of the same size, color, and type.

Danly/IEM is a registered trademark of Connell Limited Partnership. MDL Mold & Die Components, Inc. is not connected, in any way, to the Danly/IEM or Connell Limited Partnership

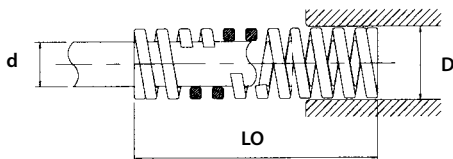


Medium Load Color Green



Rectangular Wire Construction

Hole Dia.	Rod Dia.	Free Length	CATALOG NUMBER	RATE Pounds Required to Deflect 1/10 inch	Load-Deflection Table				
					Maximum Operating Deflection		Total Travel to Solid		
					Load lbs.	Deflect in.	Load lbs.	Deflect in.	
D	d	LO							
3/8	3/16	1	SSG.006.004	5.7	23	.40	32	.56	
		1 1/4	SSG.006.005	4.9	25	.50	35	.72	
		1 1/2	SSG.006.006	3.9	23	.60	34	.87	
		1 3/4	SSG.006.007	3.4	24	.70	35	1.02	
		2	SSG.006.008	2.9	23	.80	33	1.14	
		2 1/2	SSG.006.010	2.5	25	1.00	38	1.50	
		3	SSG.006.012	1.8	22	1.20	33	1.81	
1/2	9/32	12	SSG.006.048	0.6	29	4.80	42	7.01	
		1	SSG.008.004	10.2	41	.40	52	.51	
		1 1/4	SSG.008.005	9.4	47	.50	63	.67	
		1 1/2	SSG.008.006	7.8	47	.60	68	.87	
		1 3/4	SSG.008.007	6.9	48	.70	68	.98	
		2	SSG.008.008	6.5	52	.80	74	1.14	
		2 1/2	SSG.008.010	5.3	53	1.00	77	1.46	
5/8	11/32	3	SSG.008.012	4.1	49	1.20	71	1.73	
		3 1/2	SSG.008.014	3.1	43	1.40	63	2.03	
		12	SSG.008.048	0.8	38	4.80	55	6.88	
		1	SSG.010.004	13.4	54	.40	58	.43	
		1 1/4	SSG.010.005	13.1	66	.50	85	.65	
		1 1/2	SSG.010.006	11.0	66	.60	87	.79	
		1 3/4	SSG.010.007	9.8	69	.70	92	.94	
3/4	3/8	2	SSG.010.008	9.0	72	.80	103	1.14	
		2 1/2	SSG.010.010	6.1	61	1.00	88	1.44	
		3	SSG.010.012	5.7	68	1.20	94	1.65	
		3 1/2	SSG.010.014	4.9	69	1.40	98	2.01	
		4	SSG.010.016	4.5	72	1.60	108	2.40	
		4 1/2	SSG.010.018	1.4	67	4.80	100	7.13	
		1	SSG.012.004	32	128	.4	162	.51	
3/4	3/8	1 1/4	SSG.012.005	24.4	123	.5	158	.65	
		1 1/2	SSG.012.006	19.3	116	.6	150	.78	
		1 3/4	SSG.012.007	16.2	113	.7	150	.92	
		2	SSG.012.008	14.2	113	.8	150	1.06	
		2 1/2	SSG.012.010	11	111	1	147	1.33	
		3	SSG.012.012	9.2	111	1.2	147	1.62	
		3 1/2	SSG.012.014	7.7	108	1.4	144	1.87	
		4	SSG.012.016	6.8	108	1.6	144	2.16	
		4 1/2	SSG.012.018	5.9	106	1.8	143	2.42	
		5	SSG.012.020	5.3	106	2	143	2.69	
		5 1/2	SSG.012.022	4.8	106	2.2	143	2.9	
		6	SSG.012.024	4.5	106	2.4	143	3.26	
12	SSG.012.048	2.2	104	4.8	140	6.48			



If a round wire spring (less force but greater travel to solid) is desired (in green, blue, or red) diameters of less than 3/4", please specify by using the prefix SRG, SRB, or SRR (instead of the usual SSG, SSB, and SSR) in the spring number.

Hole Dia.	Rod Dia.	Free Length	CATALOG NUMBER	RATE Pounds Required to Deflect 1/10 inch	Load-Deflection Table					
					Maximum Operating Deflection		Total Travel to Solid			
					Load lbs.	Deflect in.	Load lbs.	Deflect in.		
D	d	LO								
1	1/2	1	SSG.016.004	61	244	.4	311	.51		
		1 1/4	SSG.016.005	46	231	.5	299	.65		
		1 1/2	SSG.016.006	36.9	221	.6	292	.79		
		1 3/4	SSG.016.007	30.5	213	.7	281	.92		
		2	SSG.016.008	26.5	212	.8	280	1.06		
		2 1/2	SSG.016.010	20.4	204	1	270	1.32		
		3	SSG.016.012	16.7	200	1.2	265	1.59		
		3 1/2	SSG.016.014	14.1	197	1.4	261	1.85		
		4	SSG.016.016	12.1	193	1.6	255	2.11		
		4 1/2	SSG.016.018	10.7	192	1.8	254	2.37		
		5	SSG.016.020	9.6	192	2	254	2.65		
		5 1/2	SSG.016.022	8.7	192	2.2	255	2.93		
1 1/4	5/8	6	SSG.016.024	8	192	2.4	255	3.21		
		7	SSG.016.028	6.9	192	2.8	255	3.67		
		8	SSG.016.032	6	192	3.2	255	4.33		
		12	SSG.016.048	4	192	4.8	255	6.5		
		1 1/2	SSG.020.006	57.8	347	.6	433	.75		
		1 3/4	SSG.020.007	47.5	332	.7	415	.87		
		2	SSG.020.008	40.7	325	.8	411	1.01		
		2 1/2	SSG.020.010	31.4	315	1	400	1.26		
		3	SSG.020.012	26.2	315	1.2	400	1.53		
		3 1/2	SSG.020.014	22.2	311	1.4	400	1.80		
		4	SSG.020.016	19.2	307	1.6	397	2.07		
		4 1/2	SSG.020.018	16.9	3.4	1.8	397	2.35		
1 1/2	3/4	5	SSG.020.020	15	300	2	390	2.60		
		5 1/2	SSG.020.022	13.5	297	2.2	386	2.86		
		6	SSG.020.024	12.3	295	2.4	383	3.11		
		7	SSG.020.028	10.4	291	2.8	377	3.63		
		8	SSG.020.032	9.1	289	3.2	375	4.14		
		10	SSG.020.040	7.2	287	4	369	5.15		
		12	SSG.020.048	5.9	284	4.8	366	6.18		
		2	1	2	SSG.024.008	60.3	483	.8	609	1.01
				2 1/2	SSG.024.010	45.8	458	1	582	1.27
				3	SSG.024.012	37.6	451	1.2	575	1.53
				3 1/2	SSG.024.014	31.8	445	1.4	572	1
				4	SSG.024.016	27.3	437	1.6	565	2.07
4 1/2	SSG.024.018			24.1	433	1.8	561	2.33		
5	SSG.024.020			21.6	432	2	559	2.59		
5 1/2	SSG.024.022			19.4	427	2.2	559	2.88		
6	SSG.024.024			17.6	423	2.4	549	3.12		
7	SSG.024.028			15	420	2.8	546	3.64		
8	SSG.024.032			13	416	3.2	528	4.06		
10	SSG.024.040			10.3	412	4	524	5.09		
12	SSG.024.048	8.5	407	4.8	516	6.1				
2 1/2	1 1/2	2 1/2	SSG.032.010	89.7	897	1	1148	1.28		
		3	SSG.032.012	71.8	861	1.2	1098	1.53		
		3 1/2	SSG.032.014	59.8	837	1.4	1076	1.8		
		4	SSG.032.016	51.3	821	1.6	1062	2.07		
		4 1/2	SSG.032.018	44.8	806	1.8	1044	2.33		
		5	SSG.032.020	39.9	797	2	1029	2.58		
		5 1/2	SSG.032.022	36	792	2.2	1029	2.86		
		6	SSG.032.024	32.6	782	2.4	1017	3.12		
		7	SSG.032.028	27.6	773	2.8	1007	3.65		
		8	SSG.032.032	23.7	758	3.2	984	4.15		
		10	SSG.032.040	18.8	752	4	978	5.2		
		12	SSG.032.048	15.4	738	4.8	960	6.23		
2 1/2	1 1/2	3	SSG.040.012	110	1320	1.2	1640	1.49		
		3 1/2	SSG.040.014	90.1	1261	1.4	1575	1.75		
		4	SSG.040.016	76.4	1222	1.6	1528	2		
		4 1/2	SSG.040.018	66.2	1192	1.8	1490	2.25		
		5	SSG.040.020	58	1160	2	1456	2.51		
		6	SSG.040.024	47.7	1145	2.4	1440	3.02		
		7	SSG.040.028	40.1	1122	2.8	1412	3.52		
		8	SSG.040.032	34.5	1104	3.2	1390	4.03		
		10	SSG.040.040	26.8	1072	4	1345	5.02		
		12	SSG.040.048	22.1	1061	4.8	1330	6.02		

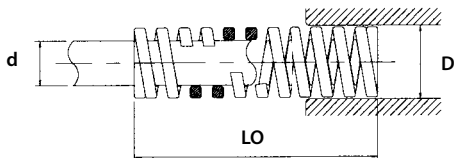


Medium High Load Color Blue



Rectangular Wire Construction

Hole Dia. D	Rod Dia. d	Free Length LO	CATALOG NUMBER	RATE Pounds Required to Deflect 1/10 inch	Load-Deflection Table			
					Maximum Operating Deflection		Total Travel to Solid	
					Load lbs.	Deflect in.	Load lbs.	Deflect in.
3/8	3/16	1	SSB.006.004	9.1	34	.38	39	.43
		1¼	SSB.006.005	7.4	35	.47	47	.63
		1½	SSB.006.006	6.8	38	.56	52	.76
		1¾	SSB.006.007	5.9	39	.66	51	.87
		2	SSB.006.008	5.1	38	.75	52	1.02
		2½	SSB.006.010	4.3	40	.94	54	1.26
		3	SSB.006.012	3	34	1.13	45	1.50
1/2	9/32	12	SSB.006.048	.9	41	4.5	53	5.87
		1	SSB.008.004	17.1	64	.38	86	.50
		1¼	SSB.008.005	14.2	67	.47	89	.63
		1½	SSB.008.006	12.2	69	.56	95	.78
		1¾	SSB.008.007	10.6	70	.66	96	.91
		2	SSB.008.008	8.8	66	.75	93	1.06
		2½	SSB.008.010	6.9	65	.94	90	1.30
5/8	11/32	3	SSB.008.012	5.8	65	1.13	89	1.54
		3½	SSB.008.014	4.8	63	1.31	87	1.81
		12	SSB.008.048	1.2	54	4.50	70	5.87
		1	SSB.010.004	28.2	106	.38	124	.44
		1¼	SSB.010.005	21.2	99	.47	112	.53
		1½	SSB.010.006	19.3	109	.56	133	.69
		1¾	SSB.010.007	17.1	112	.66	142	.83
3/4	3/8	2	SSB.010.008	15.1	113	.75	148	.98
		2½	SSB.010.010	11.7	110	.94	143	1.22
		3	SSB.010.012	10.2	115	1.13	153	1.50
		3½	SSB.010.014	8.7	114	1.31	154	1.77
		4	SSB.010.016	7.7	116	1.50	157	2.04
		12	SSB.010.048	2.7	122	4.50	160	5.91
		3/4	3/8	1	SSB.012.004	51.5	193	.38
1¼	SSB.012.005			38.9	182	.47	212	.55
1½	SSB.012.006			31.3	176	.56	206	.66
1¾	SSB.012.007			25.8	169	.66	197	.76
2	SSB.012.008			22.2	167	.75	194	.87
2½	SSB.012.010			17.3	165	.94	189	1.09
3	SSB.012.012			14.2	160	1.12	186	1.31
3½	SSB.012.014			12.2	160	1.31	186	1.54
4	SSB.012.016			10.6	159	1.5	186	1.75
4½	SSB.012.018			9.3	157	1.69	184	1.98
5	SSB.012.020			8.3	156	1.87	184	2.21
5½	SSB.012.022			7.5	156	2.06	183	2.43
6	SSB.012.024	6.9	156	2.25	183	2.65		
12	SSB.012.048	3.5	156	4.5	183	5.35		



If a round wire spring (less force but greater travel to solid) is desired (in green, blue, or red) diameters of less than 3/4", please specify by using the prefix SRG, SRB, or SRR (instead of the usual SSG, SSB, and SSR) in the spring number.

Hole Dia. D	Rod Dia. d	Free Length LO	CATALOG NUMBER	RATE Pounds Required to Deflect 1/10 inch	Load-Deflection Table					
					Maximum Operating Deflection		Total Travel to Solid			
					Load lbs.	Deflect in.	Load lbs.	Deflect in.		
1	1/2	1	SSB.016.004	95.1	357	.37	409	.43		
		1¼	SSB.016.005	71.3	334	.47	385	.54		
		1½	SSB.016.006	56.4	317	.56	367	.65		
		1¾	SSB.016.007	47.5	312	.66	366	.77		
		2	SSB.016.008	41.1	308	.75	366	.89		
		2½	SSB.016.010	31.5	295	.94	350	1.11		
		3	SSB.016.012	25.8	290	1.12	346	1.34		
		3½	SSB.016.014	21.7	285	1.31	336	1.55		
		4	SSB.016.016	18.8	282	1.5	333	1.77		
		4½	SSB.016.018	16.6	280	1.69	332	2		
		5	SSB.016.020	15	280	1.87	332	2.25		
		5½	SSB.016.022	13.5	279	2.06	332	2.48		
1¼	5/8	6	SSB.016.024	12.4	279	2.25	322	2.7		
		7	SSB.016.028	10.5	276	2.62	330	3.14		
		8	SSB.016.032	9.1	273	3	326	3.58		
		12	SSB.016.048	6	269	4.5	320	5.35		
		1½	SSB.020.006	94.7	533	.56	606	.65		
		1¾	SSB.020.007	77.9	511	.66	584	.75		
		2	SSB.020.008	66.2	496	.75	569	.86		
		2½	SSB.020.010	50.1	470	.94	531	1.06		
		3	SSB.020.012	40.5	456	1.12	514	1.27		
		3½	SSB.020.014	34.2	445	1.31	510	1.49		
		4	SSB.020.016	29.6	444	1.5	510	1.71		
		4½	SSB.020.018	26.3	444	1.69	510	1.94		
1½	3/4	5	SSB.020.020	23.7	444	1.87	510	2.18		
		5½	SSB.020.022	21.4	441	2.06	510	2.39		
		6	SSB.020.024	19.4	437	2.25	506	2.61		
		7	SSB.020.028	16.6	437	2.62	506	3.05		
		8	SSB.020.032	14.4	432	3	501	3.48		
		10	SSB.020.040	11.4	428	3.75	498	4.36		
		12	SSB.020.048	9.5	428	4.5	498	5.25		
		2	1	2	SSB.024.008	97.5	731	.75	809	.83
				2½	SSB.024.010	73.6	690	.94	765	1.04
				3	SSB.024.012	60.1	676	1.12	757	1.26
				3½	SSB.024.014	50.1	658	1.31	736	1.47
				4	SSB.024.016	43.4	651	1.5	733	1.69
4½	SSB.024.018			38	641	1.69	720	1.89		
5	SSB.024.020			34	638	1.87	720	2.12		
5½	SSB.024.022			31	638	2.06	720	2.33		
6	SSB.024.024			28	630	2.25	714	2.55		
7	SSB.024.028			23.7	622	2.62	709	2.99		
8	SSB.024.032			20.6	618	3	707	3.42		
10	SSB.024.040			16.5	618	3.75	707	4.33		
12	SSB.024.048	13.6	612	4.5	703	5.17				
2½	1½	2½	SSB.032.010	121	1133	.94	1272	1.05		
		3	SSB.032.012	95.6	1076	1.12	1197	1.25		
		3½	SSB.032.014	80.2	1053	1.31	1180	1.46		
		4	SSB.032.016	69.5	1043	1.5	1180	1.7		
		4½	SSB.032.018	61.2	1033	1.69	1180	1.93		
		5	SSB.032.020	54	1013	1.87	1160	2.13		
		5½	SSB.032.022	49	1009	2.06	1155	2.36		
		6	SSB.032.024	44.6	1004	2.25	1160	2.59		
		7	SSB.032.028	37.9	995	2.62	1155	3.05		
		8	SSB.032.032	32.8	984	3	1140	3.47		
		9	SSB.032.036	29	979	3.38	1140	3.93		
		10	SSB.032.040	26.1	979	3.75	1140	4.39		
12	SSB.032.048	21.5	968	4.5	1135	5.27				
2½	1½	3	SSB.040.012	174	1954	1.12	2240	1.29		
		3½	SSB.040.014	143	1872	1.31	2160	1.52		
		4	SSB.040.016	121	1814	1.5	2104	1.74		
		4½	SSB.040.018	106	1792	1.69	2103	1.98		
		5	SSB.040.020	93.7	1757	1.87	2080	2.22		
		6	SSB.040.024	75.8	1706	2.25	2024	2.67		
		7	SSB.040.028	63.7	1672	2.62	1987	3.12		
		8	SSB.040.032	54.9	1647	3	1960	3.57		
		9	SSB.040.036	48.7	1643	3.38	1960	4.06		
		10	SSB.040.040	43.8	1642	3.75	1960	4.56		
		12	SSB.040.048	36.2	1629	4.5	1960	5.45		

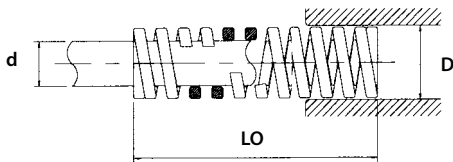


Heavy Duty Load Color Red



Rectangular Wire Construction

Hole Dia. D	Rod Dia. d	Free Length LO	CATALOG NUMBER	RATE Pounds Required to Deflect 1/10 inch	Load-Deflection Table			
					Maximum Operating Deflection		Total Travel to Solid	
					Load lbs.	Deflect in.	Load lbs.	Deflect in.
3/8	3/16	1	SSR.006.004	12.6	38	.30	47	.37
		1 1/4	SSR.006.005	10	38	.38	47	.47
		1 1/2	SSR.006.006	9.8	44	.45	58	.59
		1 3/4	SSR.006.007	8.6	45	.53	65	.75
		2	SSR.006.008	7.3	44	.60	63	.86
		2 1/2	SSR.006.010	6.1	46	.75	65	1.06
		3	SSR.006.012	4.3	39	.90	54	1.26
		12	SSR.006.048	1.2	43	3.6	63	5.27
1/2	9/32	1	SSR.008.004	24	72	.30	106	.44
		1 1/4	SSR.008.005	18.9	71	.38	106	.56
		1 1/2	SSR.008.006	16.7	75	.45	115	.69
		1 3/4	SSR.008.007	14	74	.53	115	.82
		2	SSR.008.008	11.2	67	.60	105	.94
		2 1/2	SSR.008.010	8.6	65	.75	98	1.14
		3	SSR.008.012	7.5	68	.90	110	1.46
		12	SSR.008.048	1.6	58	3.60	82	5.12
5/8	11/32	1	SSR.010.004	43.2	130	.30	160	.37
		1 1/4	SSR.010.005	30.1	113	.38	151	.50
		1 1/2	SSR.010.006	27.7	125	.45	166	.60
		1 3/4	SSR.010.007	24.4	128	.53	183	.75
		2	SSR.010.008	21.2	127	.60	176	.83
		2 1/2	SSR.010.010	17.3	130	.75	183	1.06
		3	SSR.010.012	14.7	132	.90	196	1.33
		12	SSR.010.048	4.1	148	3.60	187	4.57
3/4	3/8	1	SSR.012.004	132	396	.3	436	.33
		1 1/4	SSR.012.005	99.6	374	.38	418	.42
		1 1/2	SSR.012.006	79.3	357	.45	404	.51
		1 3/4	SSR.012.007	65	345	.53	383	.59
		2	SSR.012.008	55.9	335	.6	375	.67
		2 1/2	SSR.012.010	43.9	329	.75	377	.86
		3	SSR.012.012	36.1	325	.9	373	1.03
		3 1/2	SSR.012.014	30.7	322	1.05	371	1.21
		4	SSR.012.016	26.7	320	1.2	371	1.39
		4 1/2	SSR.012.018	23.6	319	1.35	371	1.58
		5	SSR.012.020	21.2	318	1.5	371	1.75
		5 1/2	SSR.012.022	19.4	318	1.65	371	1.92
6	SSR.012.024	17.6	317	1.8	371	2.11		
12	SSR.012.048	8.6	309	3.6	360	4.18		



If a round wire spring (less force but greater travel to solid) is desired (in green, blue, or red) diameters of less than 3/4", please specify by using the prefix SRG, SRB, or SRR (instead of the usual SSG, SSB, and SSR) in the spring number.

Hole Dia. D	Rod Dia. d	Free Length LO	CATALOG NUMBER	RATE Pounds Required to Deflect 1/10 inch	Load-Deflection Table			
					Maximum Operating Deflection		Total Travel to Solid	
					Load lbs.	Deflect in.	Load lbs.	Deflect in.
1	1/2	1 1/4	SSR.016.005	158	592	.38	663	.42
		1 1/2	SSR.016.006	125	564	.45	639	.51
		1 3/4	SSR.016.007	105	558	.53	642	.61
		2	SSR.016.008	89.8	539	.6	638	.71
		2 1/2	SSR.016.010	69.4	521	.75	618	.89
		3	SSR.016.012	57.2	515	.9	618	1.08
		3 1/2	SSR.016.014	48	506	1.05	618	1.28
		4	SSR.016.016	42	504	1.2	618	1.47
		4 1/2	SSR.016.018	37.2	502	1.35	618	1.66
		5	SSR.016.020	33.2	498	1.5	618	1.86
		5 1/2	SSR.016.022	30	498	1.65	618	2.06
		6	SSR.016.024	27.6	497	1.8	618	2.24
7	SSR.016.028	23.6	496	2.1	618	2.62		
8	SSR.016.032	20.5	494	2.4	618	3.02		
12	SSR.016.048	13.8	494	3.6	618	4.6		
1 1/4	5/8	1 1/2	SSR.020.006	215	967	.45	1052	.49
		1 3/4	SSR.020.007	177	940	.53	1026	.58
		2	SSR.020.008	150	902	.6	1007	.67
		2 1/2	SSR.020.010	117	876	.75	1004	.86
		3	SSR.020.012	94.7	852	.9	985	1.04
		3 1/2	SSR.020.014	79.1	831	1.05	973	1.23
		4	SSR.020.016	69.1	829	1.2	974	1.41
		4 1/2	SSR.020.018	60.8	821	1.35	960	1.59
		5	SSR.020.020	54.7	821	1.5	985	1.8
		5 1/2	SSR.020.022	49	809	1.65	965	1.97
		6	SSR.020.024	44.9	808	1.8	965	2.15
		7	SSR.020.028	38.1	800	2.1	960	2.52
8	SSR.020.032	33	792	2.4	947	2.87		
10	SSR.020.040	26.4	792	3	960	3.65		
12	SSR.020.048	21.8	785	3.6	951	4.36		
1 1/2	3/4	2	SSR.024.008	201	1207	.6	1388	.69
		2 1/2	SSR.024.010	153	1150	.75	1350	.88
		3	SSR.024.012	125	1125	.9	1340	1.07
		3 1/2	SSR.024.014	106	1108	1.05	1340	1.27
		4	SSR.024.016	90.7	1088	1.2	1333	1.47
		4 1/2	SSR.024.018	80.5	1086	1.35	1340	1.69
		5	SSR.024.020	71.5	1072	1.5	1337	1.87
		5 1/2	SSR.024.022	64	1065	1.65	1335	2.08
		6	SSR.024.024	59.1	1064	1.8	1347	2.28
		7	SSR.024.028	50.3	1056	2.1	1343	2.67
		8	SSR.024.032	43.8	1051	2.4	1347	3.07
		10	SSR.024.040	34.6	1038	3	1332	3.85
12	SSR.024.048	28.7	1033	3.6	1339	4.65		
2	1	2 1/2	SSR.032.010	242	1815	.75	2080	.86
		3	SSR.032.012	193	1737	.9	2007	1.04
		3 1/2	SSR.032.014	161	1686	1.05	1960	1.22
		4	SSR.032.016	140	1678	1.2	1960	1.43
		4 1/2	SSR.032.018	123	1658	1.35	1960	1.63
		5	SSR.032.020	108	1622	1.5	1935	1.79
		5 1/2	SSR.032.022	97	1600	1.65	1910	1.97
		6	SSR.032.024	88.1	1586	1.8	1910	2.15
		7	SSR.032.028	75.1	1583	2.1	1910	2.55
		8	SSR.032.032	65.9	1582	2.4	1910	2.91
		10	SSR.032.040	51.6	1548	3	1875	3.62
		12	SSR.032.048	42.7	1537	3.6	1875	4.45

Die Spring Color Conversion Chart

Associated Spring Raymond *



MDL Mold & Die Components



* Associated Spring Raymond is a trademark of Barnes Group Inc. MDL Mold & Die Components, is not affiliated in any way with Associated Spring Raymond, or Barnes Group, Inc.



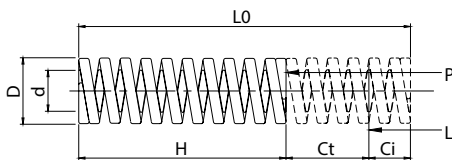
Extra Heavy Duty Load Color Yellow



Rectangular Wire Construction

Hole Dia. D	Rod Dia. d	Free Length LO	CATALOG NUMBER	RATE Pounds Required to Deflect 1/10 inch	Load-Deflection Table			
					Maximum Operating Deflection		Total Travel to Solid	
					Load lbs.	Deflect in.	Load lbs.	Deflect in.
3/8	3/16	1	SSY.006.004	18.7	46.8	.25	62	.33
		1 1/4	SSY.006.005	14.3	45	.31	60	.41
		1 1/2	SSY.006.006	12.1	45	.38	60	.52
		1 3/4	SSY.006.007	10.1	44.2	.44	60	.6
		2	SSY.006.008	8.8	43.8	.5	60	.68
		2 1/2	SSY.006.010	7	43.5	.63	60	.86
		3	SSY.006.012	5.8	43.3	.75	60	1.05
		12	SSY.006.048	1.4	42	3	59	4.2
1/2	9/32	1	SSY.008.004	33.5	84	.25	119	.35
		1 1/4	SSY.008.005	25.3	79	.31	110	.43
		1 1/2	SSY.008.006	20.7	78	.38	110	.52
		1 3/4	SSY.008.007	17.5	77	.44	110	.61
		2	SSY.008.008	15.5	77	.5	110	.72
		2 1/2	SSY.008.010	12.4	77	.63	110	.9
		3	SSY.008.012	10.1	76	.75	110	1.12
		12	SSY.008.048	2.4	72	3	108	4.47
5/8	11/32	1	SSY.010.004	72.1	180	.25	256	.35
		1 1/4	SSY.010.005	53.3	167	.31	230	.43
		1 1/2	SSY.010.006	43	161	.38	221	.51
		1 3/4	SSY.010.007	36	158	.44	220	.6
		2	SSY.010.008	31.4	157	.5	220	.71
		2 1/2	SSY.010.010	24.5	153	.63	218	.88
		3	SSY.010.012	20.1	151	.75	216	1.06
		12	SSY.010.048	4.8	145	3	214	4.43
3/4	3/8	1	SSY.012.004	184	460	.25	551	.3
		1 1/4	SSY.012.005	138	431	.31	535	.39
		1 1/2	SSY.012.006	112	419	.38	535	.48
		1 3/4	SSY.012.007	92.8	406	.44	529	.57
		2	SSY.012.008	80.1	401	.5	527	.66
		2 1/2	SSY.012.010	62.5	391	.63	525	.84
		3	SSY.012.012	51.5	386	.75	522	1.02
		3 1/2	SSY.012.014	43.4	380	.88	516	1.19
		4	SSY.012.016	37.5	375	1	508	1.36
		4 1/2	SSY.012.018	33	371	1.13	508	1.52
		5	SSY.012.020	29.7	371	1.25	505	1.71
		5 1/2	SSY.012.022	27	371	1.38	505	1.87
6	SSY.012.024	24.4	366	1.5	505	2.04		
12	SSY.012.048	12.1	363	3	505	4.16		

Hole Dia. D	Rod Dia. d	Free Length LO	CATALOG NUMBER	RATE Pounds Required to Deflect 1/10 inch	Load-Deflection Table			
					Maximum Operating Deflection		Total Travel to Solid	
					Load lbs.	Deflect in.	Load lbs.	Deflect in.
1	1/2	1 1/4	SSY.016.005	202	637	.31	799	.4
		1 1/2	SSY.016.006	160	600	.38	768	.48
		1 3/4	SSY.016.007	132	589	.44	749	.57
		2	SSY.016.008	113	564	.5	733	.65
		2 1/2	SSY.016.010	87.9	549	.63	735	.84
		3	SSY.016.012	71.4	536	.75	720	1.01
		3 1/2	SSY.016.014	60.2	526	.88	720	1.18
		4	SSY.016.016	52	520	1	715	1.35
		4 1/2	SSY.016.018	46.2	520	1.13	715	1.55
		5	SSY.016.020	41.2	515	1.25	715	1.72
		5 1/2	SSY.016.022	38	515	1.38	715	1.91
		6	SSY.016.024	34.4	515	1.5	715	2.11
7	SSY.016.028	29.3	512	1.75	715	2.48		
8	SSY.016.032	25.5	510	2	715	2.48		
12	SSY.016.048	16.9	507	3	715	4.31		
1 1/4	5/8	1 1/2	SSY.020.006	279	1047	.38	1231	.44
		1 3/4	SSY.020.007	231	1011	.44	1225	.53
		2	SSY.020.008	197	986	.5	1222	.62
		2 1/2	SSY.020.010	153	953	.63	1220	.8
		3	SSY.020.012	123	925	.75	1200	.97
		3 1/2	SSY.020.014	104	911	.88	1195	1.15
		4	SSY.020.016	89.1	891	1	1160	1.3
		4 1/2	SSY.020.018	77.8	875	1.13	1160	1.46
		5	SSY.020.020	69.8	873	1.25	1160	1.64
		5 1/2	SSY.020.022	64	870	1.38	1160	1.85
		6	SSY.020.024	57.9	869	1.5	1160	2
		7	SSY.020.028	49	858	1.75	1160	2.33
8	SSY.020.032	42.8	856	2	1160	2.69		
10	SSY.020.040	34.1	853	2.5	1160	3.42		
12	SSY.020.048	28.3	849	3	1160	4.14		
1 1/2	3/4	2	SSY.024.008	320	1598	.5	1964	.62
		2 1/2	SSY.024.010	241	1504	.63	1885	.78
		3	SSY.024.012	193	1448	.75	1834	.95
		3 1/2	SSY.024.014	161	1411	.88	1802	1.12
		4	SSY.024.016	140	1395	1	1813	1.3
		4 1/2	SSY.024.018	122	1373	1.13	1796	1.47
		5	SSY.024.020	109	1356	1.25	1779	1.64
		5 1/2	SSY.024.022	98	1348	1.38	1774	1.81
		6	SSY.024.024	88.8	1332	1.5	1754	1.97
		7	SSY.024.028	75.1	1314	1.75	1733	2.31
		8	SSY.024.032	65.1	1302	2	1730	2.65
		10	SSY.024.040	71.7	1293	2.5	1730	3.35
12	SSY.024.048	42.9	1287	3	1730	4.06		
2	1	2 1/2	SSY.032.010	413	2583	.63	3140	.76
		3	SSY.032.012	327	2453	.75	3013	.92
		3 1/2	SSY.032.014	271	2369	.88	2929	1.08
		4	SSY.032.016	231	2309	1	2872	1.24
		4 1/2	SSY.032.018	201	2265	1.13	2828	1.41
		5	SSY.032.020	178	2230	1.25	2794	1.57
		5 1/2	SSY.032.022	161	2214	1.38	2790	1.75
		6	SSY.032.024	145	2181	1.5	2745	1.89
		7	SSY.032.028	123	2147	1.75	2712	2.21
		8	SSY.032.032	106	2122	2	2686	2.53
		10	SSY.032.040	83.5	2088	2.5	2653	3.18
		12	SSY.032.048	68.9	2067	3	2633	3.82



$C_i < 20\% C_t$
 $C_i + C_t < \text{Max operation deflection}$

Suggestions

- D = Hole diameter (in)
- LO = Free Length (in)
- d = Rod diameter (in)
- H = Compressed length (in)
- C_i = Initial compression (in)
- L = Pre-load (lbs)
- C_t = Operating travel (in)
- P = Load required to Deflect C_i + C_t (lbs)



MDL - Brazil



MDL - France



MDL - Mexico



MDL - India



MDL - USA



MDL - Porter Besson, France



MDL - Mold & Die Components Inc.

4572 N. Long Road - Columbus - Indiana - 47203

Phone: 1-800-574-0059 or 1-812-373-0021 - Fax 1-812-373-0042

www.mdlcomponents.com • sales1@mdlcomponents.com